

Carcharodon carcharias (LINNAEUS, 1758)



Photo by Terry Goss, Copyright 2006, GNU Free Documentation License

Class Chondrichthyes

Order Lamniformes

Family Lamnidae MÜLLER & HENLE, 1838

Genus Carcharodon SMITH IN MÜLLER & HENLE, 1838


[Carcharodon carcharias](#) (LINNAEUS, 1758)

Protective laws in Germany/EU:


- [Convention on International Trade in Endangered Species of Wild Fauna and Flora](#) annex: II
- [Council Regulation 338/1997 annex: B](#)
- [BArtSchV](#) Novellierung Anhang: 1 (Fußnote (6): nur Population des Mittelmeeres)
- [BNatSchG](#) Anhang: b (streng bzw. besonders geschützt)

Common name:

 german

 english


 span

 portuguese

 french

 italian


 greek

 norwegian

 danish


 dutch

 maltese

 finnish

 czech

 polish

 rumanian

Weißer Hai, Menschenhai, Weißhai

Great white shark, Man eater

Jaquentón blanco, Jaquetón de ley, Marrajo, Tiburón blanco, Devorador de hombres

Tubarão-branco, Tubarao de Sao Tomé, Tubarão-anequim, Anequim

Grand requin blanc, Mangeur d'hommes

Squalo bianco, Pesci cani, Pesci can, Manzo de mar, Mangia alici, Canesca, Pesci bistinu

Λάμια, Σμπρίλιος, Καρχαρίας, Σκυλόψαρο
Hvithai

Hvid Haj, Stor hvid haj, Blå haj

Witte haai, Mensenhaai

Kelb Abjad, Huta tax-Xmara, Kelb il - Bahar Abjad

Valkohai

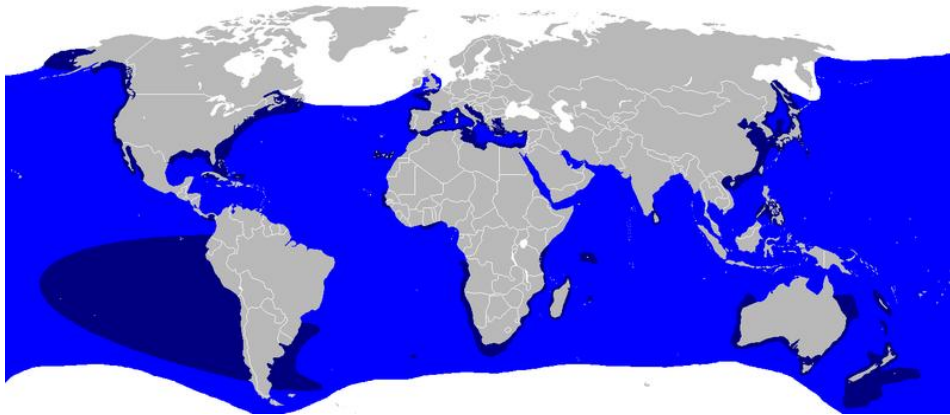
Žralok bílý veliký

Zarlacz ludojad

Rechin alb, Rechin mancator de oameni

Geographical Distribution:

all over the world - with the exeption of the cold area of the Arctic and the Antarctic, as well as the Black Sea and the Baltic Sea.



source: www.wikipedia.de Creative Commons Attribution ShareAlike 3.0 License

Description:

Size (max.): 792 cm (female)

Weight (max): ca. 3,400 kg

Age (max): ca. 36 years

Body fusiform, snout conical and relatively short, long gill slits not encircling the head. Large first dorsal fin with the origin over pectoral fin inner margins. Second dorsal and anal fins minute. Caudal fin homocercal (crescent shaped), without a secondary keel below extension of caudal keel.

Dorsal surface blue-grey to grey-brown, often bronzy. Ventral surface is white. Boundary between these tones is generally abrupt. Small, irregular dark spots may be present on the flanks posterior to the last gill slit. Most specimens exhibit a black oval blotch in the axil of the pectoral fin.

Teeth large, erect, triangular and serrated. More slender in lower jaw. In juveniles under 1.8 m (5.5 ft), the teeth have small lateral cusplets and in neonates, the lower teeth may actually lack marginal serration.

(Source: <http://www.flmnh.ufl.edu/fish/Gallery/Descript/Whiteshark/whiteshark.html>)

Numer of teeth: upper jaw: 23 - 28 teeth, lower jaw: 20 - 26.

Size (max.) of the teeth: more than 6,00 cm.

Usual article of trade of *C. carcharias*:

Teeth/jaws:

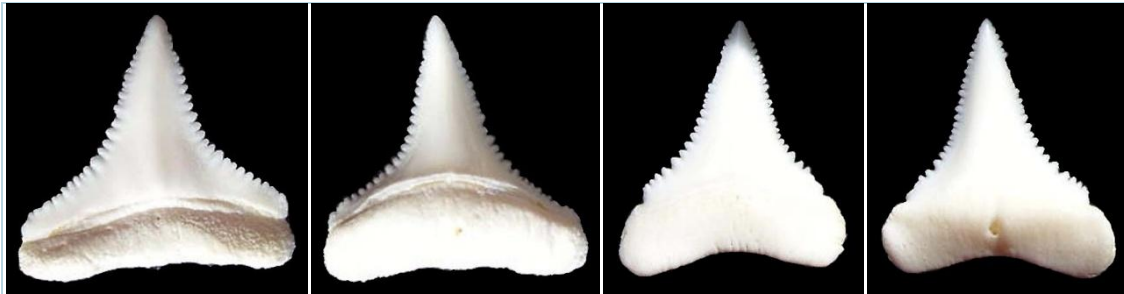


Usual country of trade:

all countrys; import by post: China (e.g. eBay), sporadic USA.



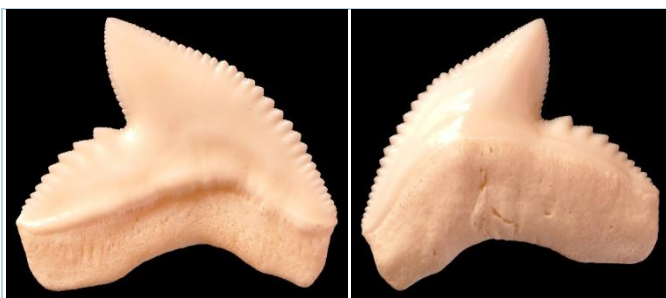
tooth of the upper jaw, ca. 5 cm (labial/lingual)



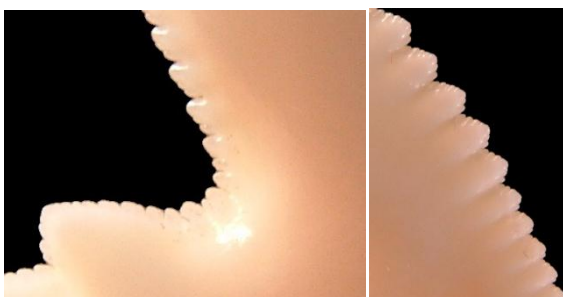
teeth of the lower jaw, ca. 2,4 cm (labial/lingual)

other serrated shark teeth:

Galeocerdo cuvier (tiger shark):

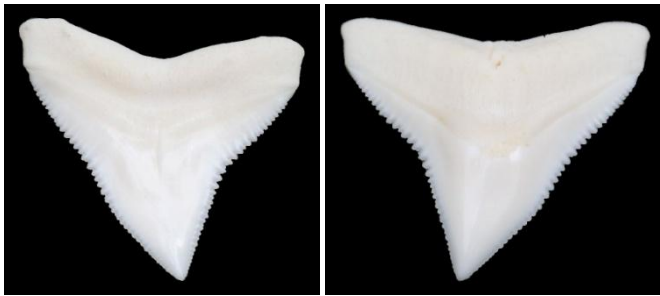


Size of the teeth: ca. 2,5 cm (labial/lingual)



Closeup views

Carcharinus leucas (Bullshark):



Size of the teeth: ca. 2,5 cm (labial/lingual)

Jewelry:



Web-Links:

Carcharodon carcharias at www.fishbase.org

Carcharodon carcharias at www.wikipedia.org

Carcharodon carcharias at www.wwf.org (in german)

Carcharodon carcharias (bibliography) at www.shark-references.com